



Your dreams. Woven together.

# ASAHI INTECC CO., LTD.

## Company Profile

---

**February, 2023**

(Securities code : 7747

Prime of Tokyo Stock Exchange,  
Premier of Nagoya Stock Exchange)



# Company Profile

<b>Company Name</b>	<b>ASAHI INTECC CO., LTD.</b>
<b>Head Office</b>	<b>3-100 Akatsuki-cho, Seto-shi, Aichi, Japan</b>
<b>Representative</b>	<b>Masahiko Miyata, President &amp; CEO</b>
<b>Date of Establishment</b>	<b>July 8, 1976 (Currently, the 47th term)</b>
<b>Business Operations</b>	<b>Development, manufacturing and sale of medical devices Development, manufacturing and sale of ultra-fine stainless steel wire ropes, terminal processed products, etc.</b>
<b>Capital</b>	<b>18,860 Mil. Yen (As of Dec. 2022 )</b>
<b>Number of Employees</b>	<b>965(Asahi Intecc only) , 10,479(Total, as of Dec. 2022)</b>
<b>Related Company</b>	<b>18 Consolidated subsidiaries, 4 Non-consolidated subsidiaries</b>
<b>R&amp;D base</b>	<b>Japan, US, Thailand</b>
<b>Manufacturing base</b>	<b>Thailand, Vietnam, Philippines</b>
<b>Sales base</b>	<b>Japan, US, Netherlands, France, Germany, Italy, Russia, China, South Korea, Taiwan, Hong Kong, Singapore, Thailand, India, UAE, Brazil</b>



# Main Sales Bases

## 10 domestic bases



**GLOBAL HEADQUARTERS AND R&D CENTER**

MEDICAL OFFICE (SAPPORO)

MEDICAL OFFICE (SENDAI)

MEDICAL OFFICE (OKAYAMA)

MEDICAL OFFICE (FUKUOKA)

MEDICAL OFFICE (OSAKA)

DEVICE OFFICE (OSAKA)

MEDICAL OFFICE Filmecc Co., Ltd. (Nagoya)

DEVICE OFFICE (TOKYO)



< Medical Brand Japan Main Sales Bases >  
ASAHI INTECC J-Sales CO., LTD.(HEADQUARTERS)

- Medical
- Device

## 17 overseas bases

EU: ASAHI INTECC EUROPE B.V.

CIS: Asahi Intecc CIS LLC

US: ASAHI INTECC USA, INC. Filmecc USA, Inc.



Germany : ASAHI INTECC Deutschland GmbH

Italy : KARDIA S.R.L

FRANCE BRANCH

MIDDLE EAST BRANCH (DUBAI)

MUMBAI BRANCH

CHINA: BEIJING REPRESENTATIVE OFFICE

KOREA BRANCH

SHANGHAI BRANCH

TAIWAN BRANCH

GUANGZHOU OFFICE

HONG KONG BRANCH

SINGAPORE BRANCH

THAILAND BRANCH

Asahi Intecc Latin Ltda.



# Global Network (R&D/Production ( Coexistence of Japan & Overseas ))



**GLOBAL HEADQUARTERS AND R&D CENTER (Product R&D)**



**TOHOKU R&D CENTER ( High-precision processing R&D)**



**THAILAND: ASAHI INTECC THAILAND CO., LTD.**

- Medical Factory
- Device Factory
- R&D

**ASAHI SURGICAL ROBOTICS (Robot R&D)**

**TOKYO R&D CENTER (Advanced technology R&D)**

**US:ASAHI INTECC USA, INC. ASAHI Medical Technologies, Inc. Filmecc USA, Inc.**

**SHIZUOKA R&D CENTER (Polymer R&D)**

**PHILIPPINES: TOYOFLEX CEBU CORPORATION**



**VIETNAM: ASAHI INTECC HANOI CO., LTD.**

**OSAKA R&D CENTER (Material R&D)**

**Filmecc Co., Ltd. (OEM R&D)**



**JAPAN : R&D/Prototype**

**OVERSEAS : Production bases**

**Japan conducts R&D and prototyping; mass production takes place in overseas factories.**



# Business Fields and Divisions

<b>FYE June 2022</b>	
<b>Revenue</b>	<b>77,748 Mill. Yen</b>
<b>Operating income</b>	<b>15,239 Mill. Yen</b>

## Medical Division

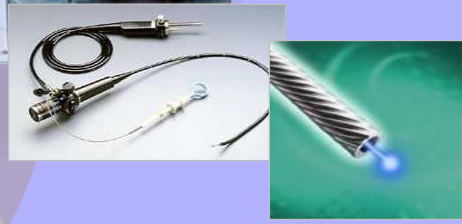
(Medical Brand / Medical OEM)



Medical Field  
(approx. 94%)

Industrial Field

(approx. 6%)



## Device Division

(Medical Components / Industrial Components)



# Main Products of Medical Device

## 【 Guide Wires and Catheters for Treatment 】

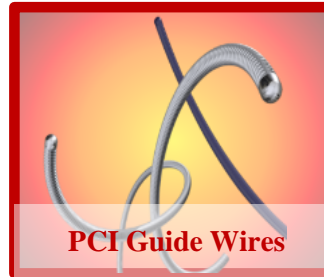
### Cardiovascular

PCI Guide Wires

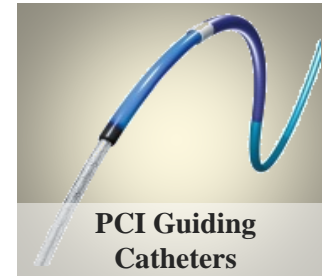
PCI Guiding Catheters

PCI Balloon Catheters

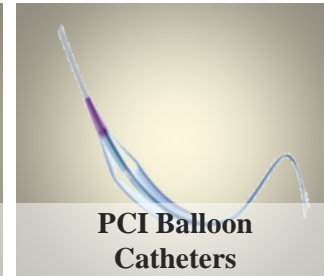
Penetration Catheters



PCI Guide Wires



PCI Guiding Catheters



PCI Balloon Catheters

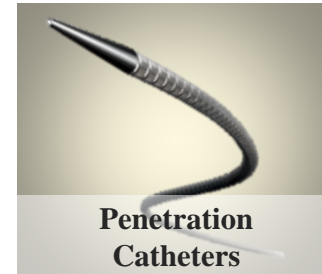
Peripheral Vascular, Abdominal Vascular, Cerebrovascular, Gastrointestinal Systems

Peripheral Guide Wires

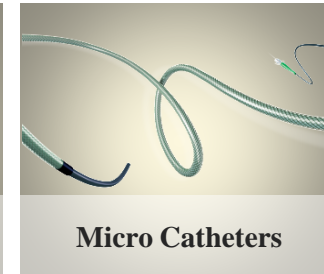
IVR Guide Wires

Cerebrovascular System Guide Wires

Gastrointestinal Guide Wires



Penetration Catheters

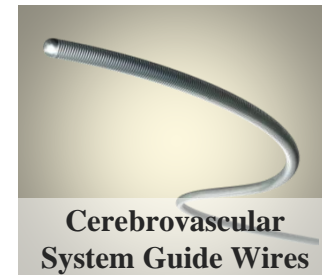


Micro Catheters

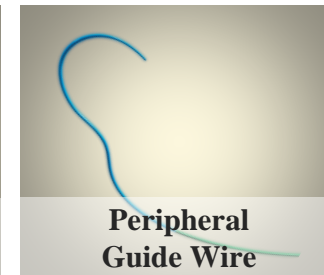
## 【 Guide Wires and Catheters for Examination 】

Guide Wires for Angiography

Catheters for Angiography



Cerebrovascular System Guide Wires



Peripheral Guide Wire

## 【 OEM supplies 】

Products other than Cardiovascular Catheters



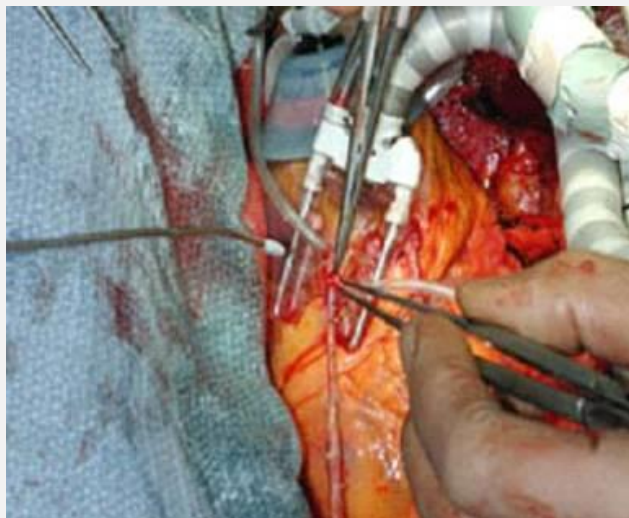


# PCI (Percutaneous Coronary Intervention) -1

- **Therapy for coronary artery disorder (angina, myocardial infarction )**
- **Recover the blood flow after dilatation of stenosed lesion**
- **Treatment through femoral or radial artery without laparotomy and thoracotomy to minimize the mental and physical burden on patients.**

## < Surgical Therapy >

### Bypass Operation



## < Interventional Therapy > Minimally Invasive Treatment

### (PCI Treatment )

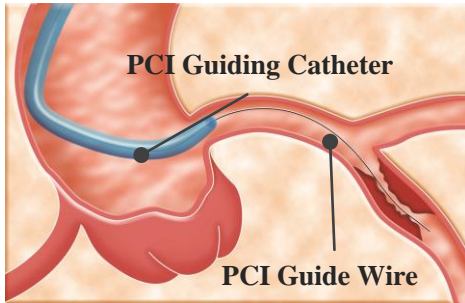




## PCI (Percutaneous Coronary Intervention) -2

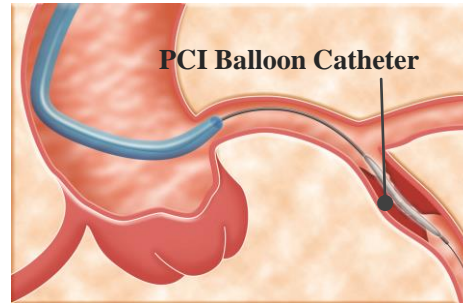
### ① PCI GW Advancement

Small size tube called PCI Guiding Catheter inserted in blood vessel. Advance PCI GW inside of this tube.



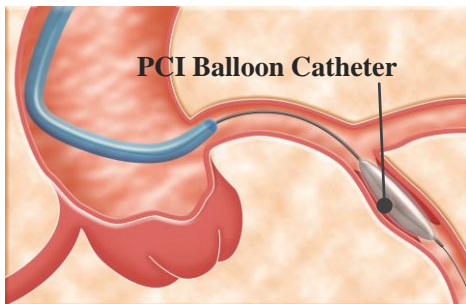
### ② PCI Balloon Catheter Tracking

Along with PCI GW, PCI Balloon Catheter trucked over PCI GW to the point of the narrowed portion of vessel.



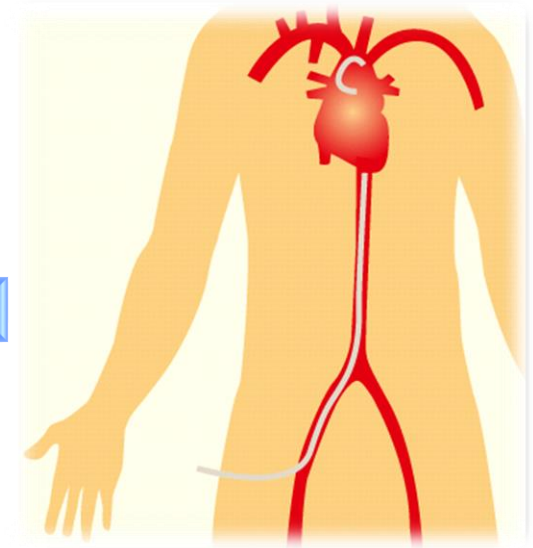
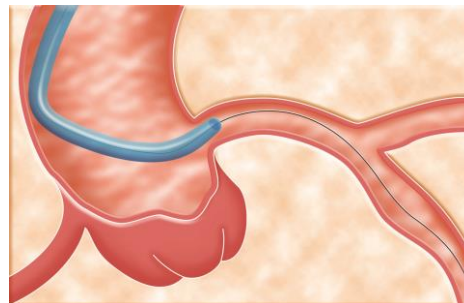
### ③ PCI Balloon Catheter dilatation

Dilate Balloon, then enlarge the blood vessel.



### ④ PCI Balloon Catheter pulled out

After Narrow portion enlarged then blood flow to recover.





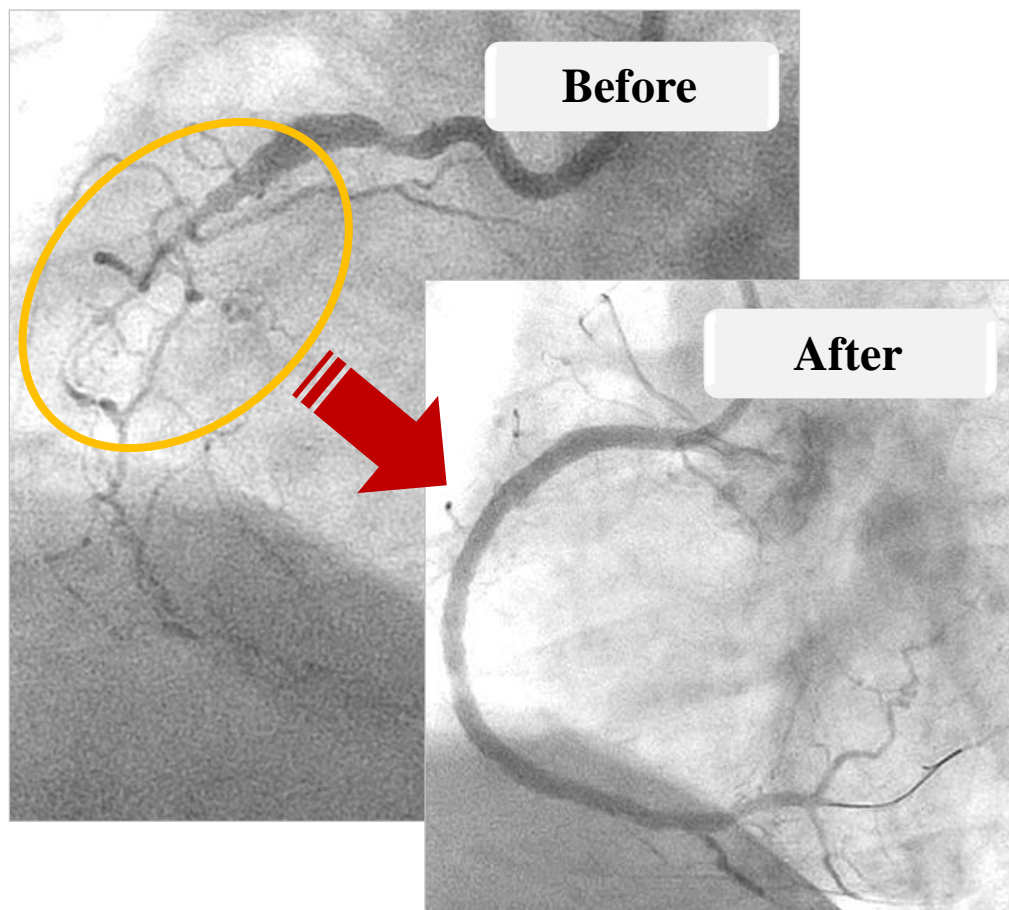


# PCI (Percutaneous Coronary Intervention) -3

Comparatively easy lesions



Lesions with high difficulty





# Advantage of our PCI Guide Wire

**High transmissibility of rotation  
(Torquability)**



**Tip flexibility  
(Safe operation)**



**Doctors manipulate the wire and try to transfer the feeling of finger tip to the distal end of wire.**

## Source of competitiveness: 4 core technologies

**Control of hardness and diameter**



**Wire drawing  
technology**

**Micron-level molding**



**Wire forming  
technology**

**Rotation following capacity**



**Torque  
technology**

Integrated production system  
handling materials down to the  
finished products

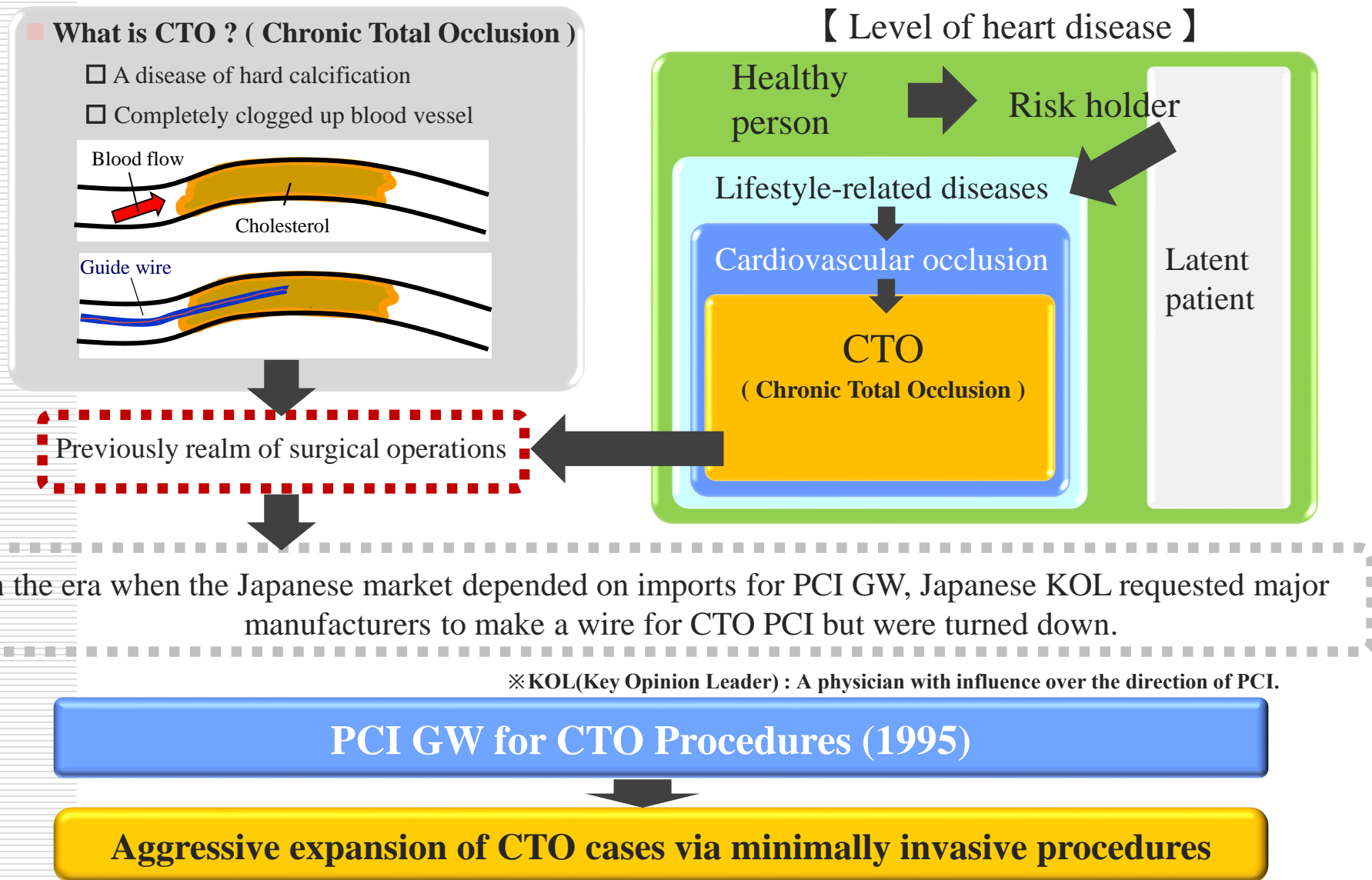
**Ultra-thin film coating**



**Resin coating  
technology**



# Our Company's Flagship CTO Treatment Implementation of PCI treatment in CTO cases





# Main Products of Device Division ( Medical Components )

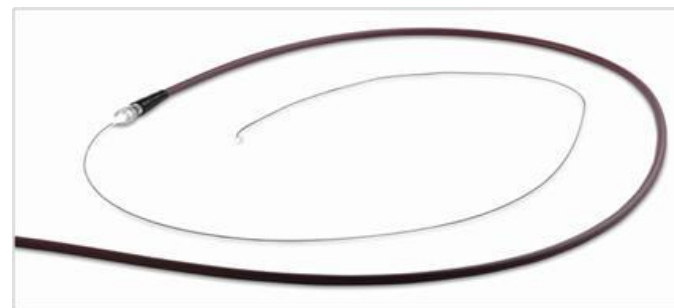
- Hollow cable tube, Stainless steel rope, other medical device components



**Wire rope / tube**  
**(Example: endoscopic accessory)**



**ACT ONE**

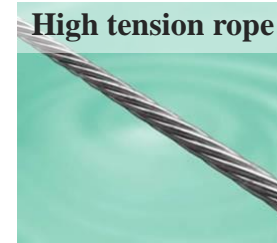


**Catheter delivery system for ENT( empyema )**



# Main Products of Device Division (Industrial Components )

- Manufacturing and sales of precision stainless steel wire rope (less than 2mm diameter)
- Market
  - Rope : Automobile, construction and fishing industries
  - Terminal fitted : office automation, baby strollers, machineries, accessories, game consoles
  - Charge wire : office automation, air cleaners, etc.



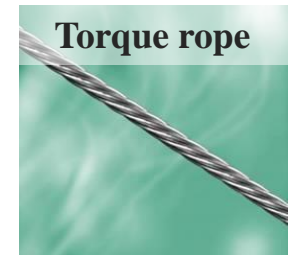
High tension rope



Terminal fitted rope



Synchromesh rope



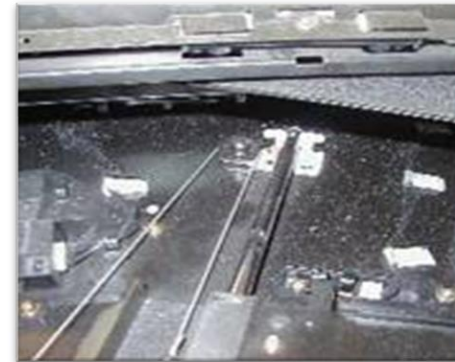
Torque rope



GLOBERIDE, Inc.  
Fishing wire



Boa System Wire Shoe String



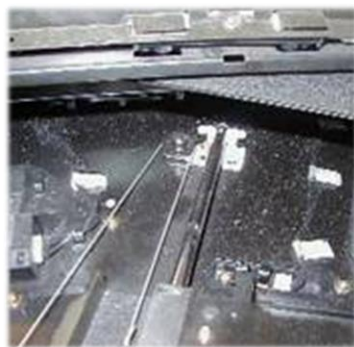
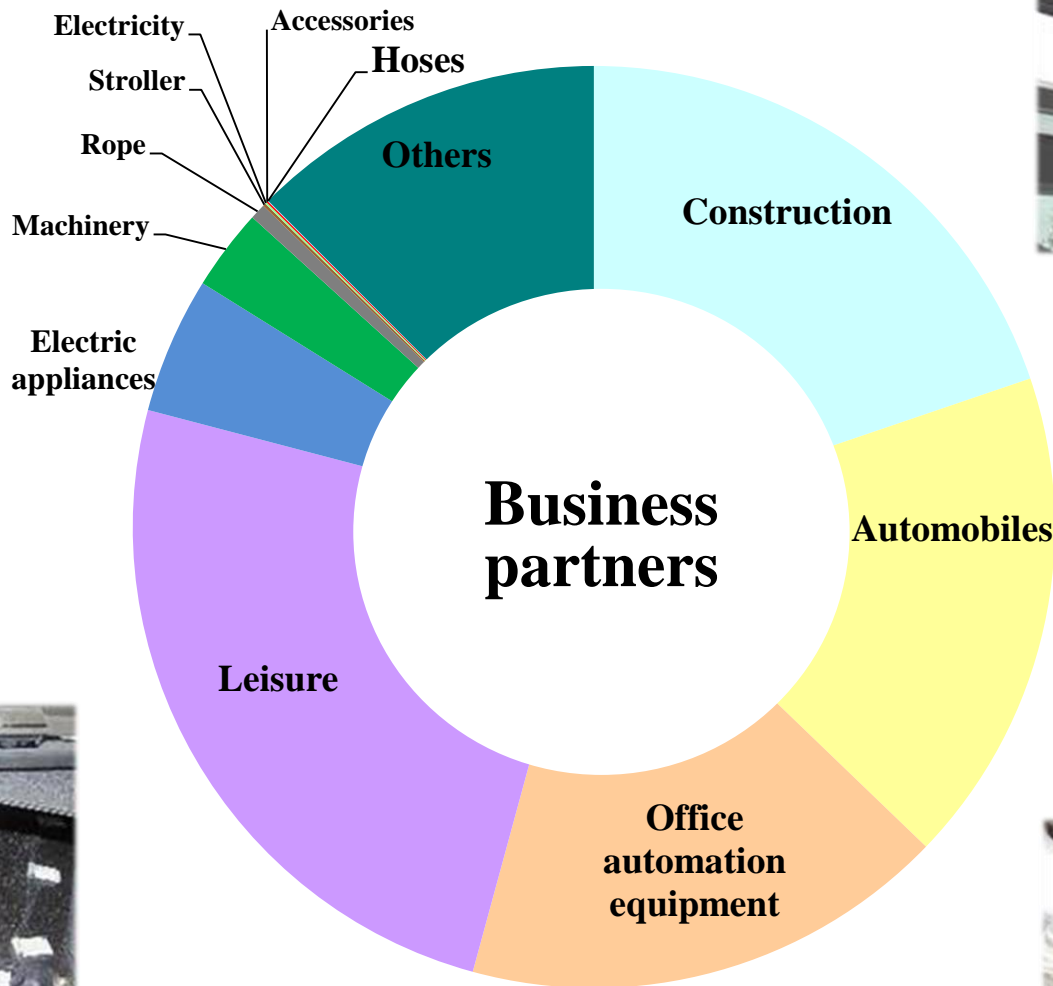
Copier driving wire



Panasonic corporation  
Air-conditioner: with filter  
cleaning function



# Wide Range of Applications from Most-advanced Devices to Household Goods



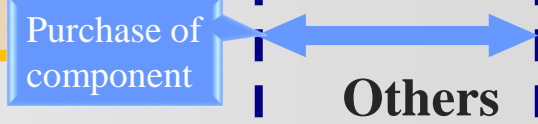
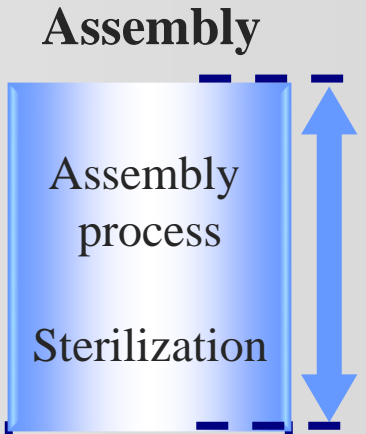
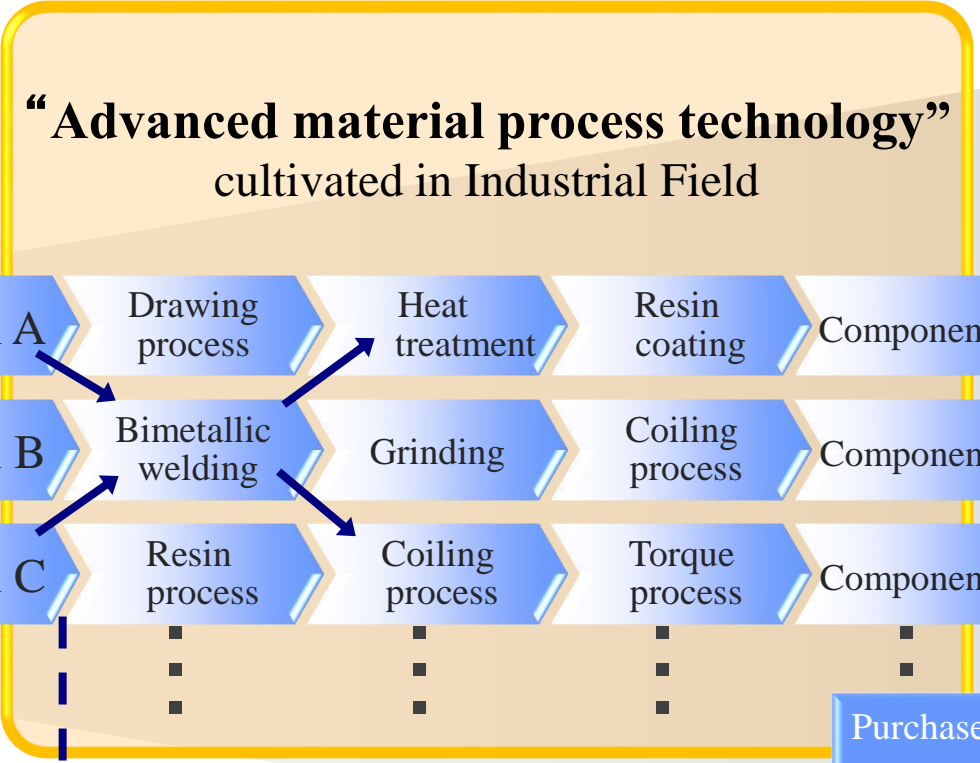
( 2022/6E )



## Our Strength and Feature

# “Competitive power in medical devices” based on “High technology for raw material”

### Experimenting/Adapting Capabilities



Others

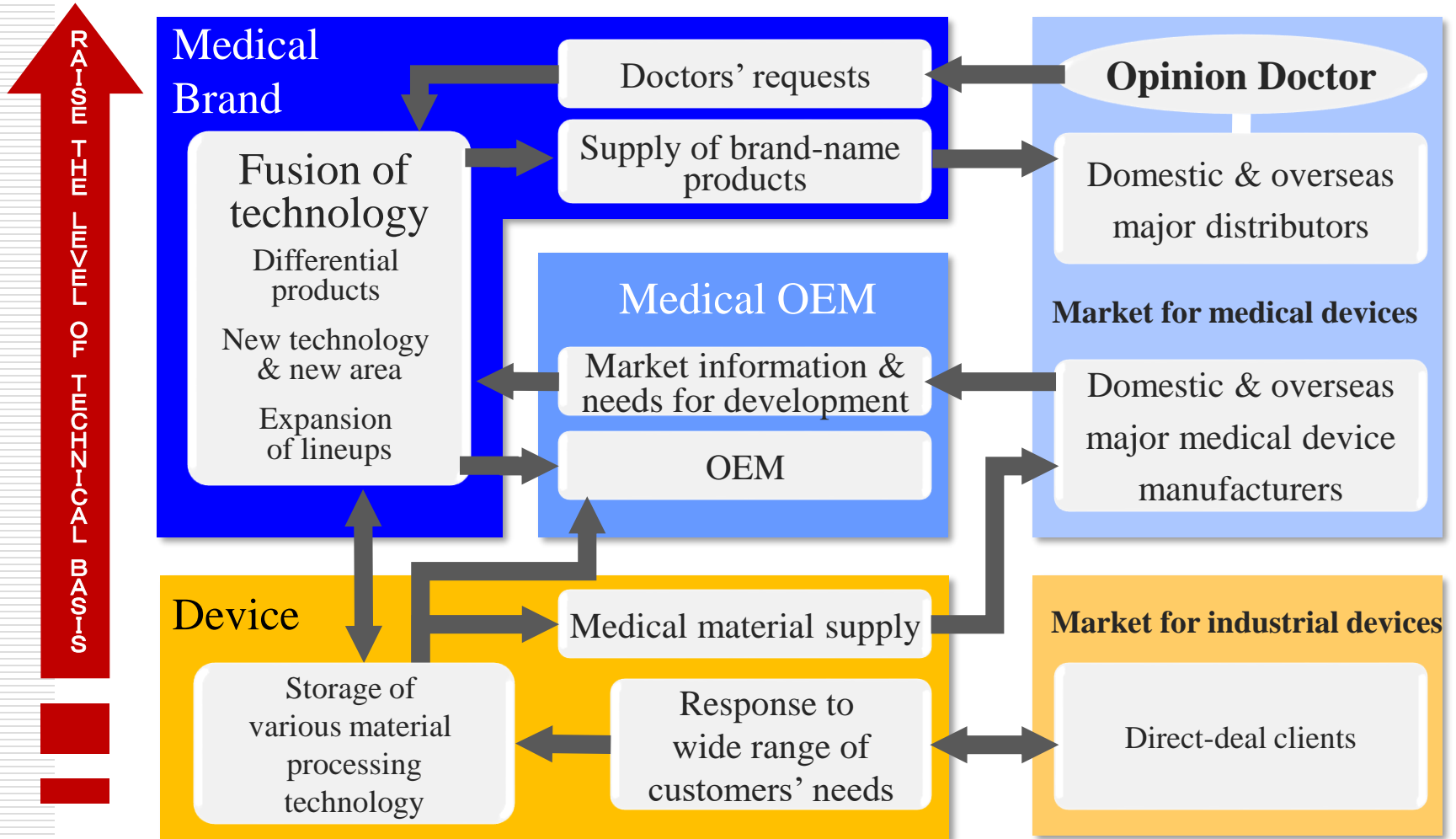


RESPONSE to USER'S NEEDS



# Our Strength and Feature

## Merits of Segmental Structure (fusion/combination/circulation)







## Caution Regarding Information Presented

---

**All forward looking statements contained herein, including revenue forecasts, outlooks, and strategic plans, are based on the best currently available data; however, risk and uncertainty are involved in these statements. Please note that actual results may differ greatly from plans presented here.**

### **【 IR contact 】**

**Asahi Intecc Co., Ltd. Corporate strategic office**

**TEL 0561-48-5551**

**URL <http://www.asahi-intecc.co.jp/en/>**